

100
0 10
Millimetres

RIDGEWAY DRIVE

DO NOT SCALE

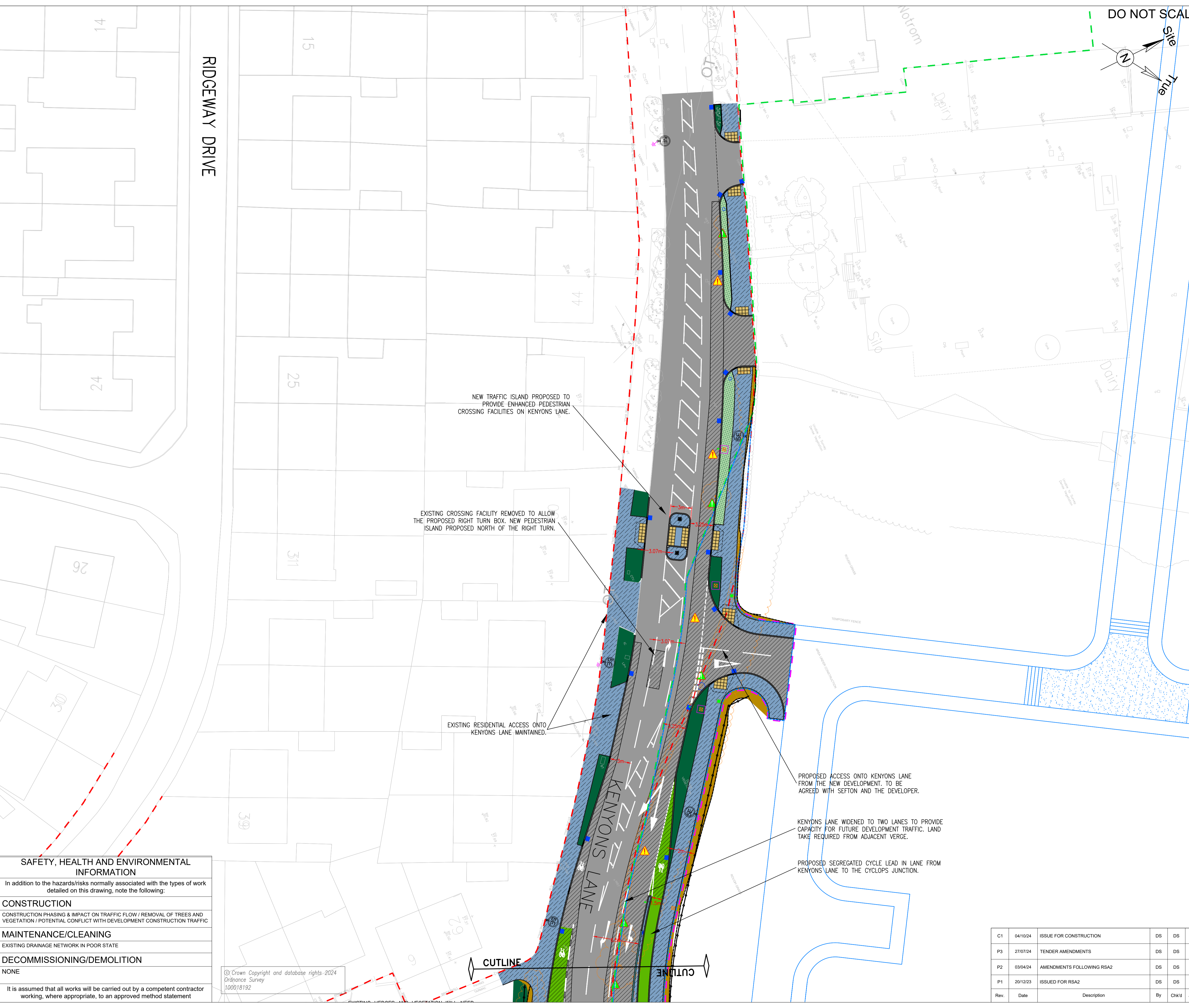
- NOTES:**
- THIS DRAWING IS INTENDED AS A DETAILED DESIGN GENERAL ARRANGEMENT AND IS NOT FOR CONSTRUCTION PURPOSES.
 - ALL DIMENSIONS ARE IN METRES UNLESS OTHERWISE SPECIFIED.
 - REFER TO THE DRAWINGS LISTED IN THE DRAWING INDEX SHEET FOR FULL CONSTRUCTION INFORMATION AND DETAILS.

- GENERAL KEY:**
- CONCRETE BLISTER TACTILE PAVING (RED)
 - CONCRETE BLISTER TACTILE PAVING (BUFF)
 - CONCRETE CORDUROY HAZARD PAVING (BUFF)
 - CONCRETE CYCLETRACK DIRECTIONAL PAVING (BUFF)
 - PROPOSED KERB LINE (125mm PCC)
 - PROPOSED DRAINAGE KERBS (150mm PCC)
 - PROPOSED BUS STOP ACCESS KERBS (PCC)
 - PROPOSED EDGING (PCC)
 - PCC CYCLETRACK DEMARCATION BLOCKS
 - PAVING SLAB RETAINING WALL
 - ROADMARKING TO TSRGD DIAG. NO. 956
 - WAND ORCA CYCLE SEPARATORS
 - PROPOSED DIRECTIONAL BOLLARD
 - PROPOSED OR RE-LOCATED PEDESTRIAN GUARDRAILING
 - PROPOSED TIMBER KNEE RAIL FENCING
 - PROPOSED ARMO CO BARRIER
 - PROPOSED BOLLARD
 - UTILITY CHAMBER OR MANHOLE CONFLICTING WITH WORKS
 - LIGHTING COLUMN - REFER TO STREET LIGHTING DRAWINGS FOR DETAILS
 - INDICATIVE TRAFFIC SIGNALS EQUIPMENT - REFER TO TRAFFIC SIGNALS DRAWINGS FOR DETAILS
 - TRAFFIC SIGNALS CHAMBER - REFER TO TRAFFIC SIGNALS DRAWINGS FOR DETAILS
 - PROPOSED GULLY - REFER TO DRAINAGE DRAWINGS FOR CONSTRUCTION DETAIL AND CONNECTIONS / DISCONNECTIONS
 - DRAINAGE KERB OUTLET - REFER TO DRAINAGE DRAWINGS FOR CONSTRUCTION DETAIL & CONNECTIONS/DISCONNECTIONS
 - DRAINAGE CHAMBER - REFER TO DRAINAGE DRAWINGS FOR CONSTRUCTION DETAIL & CONNECTIONS/DISCONNECTIONS

- LAND & BOUNDARY KEY:**
- EXISTING HIGHWAY BOUNDARY
 - DEVELOPMENT BOUNDARY
 - PROPOSED HIGHWAY BOUNDARY
 - S278 WORKS BOUNDARY

- SURFACE FINISHES KEY:**
- RE-SURFACED CARRIAGEWAY (ASPHALT CONCRETE 100mm PLANE, INLAY AND REGULATE)
 - PROPOSED CARRIAGEWAY CONSTRUCTION (ASPHALT CONCRETE FULL DEPTH CONSTRUCTION)
 - PROPOSED AC FOOTWAY (ASPHALT CONCRETE SURFACING, BINDER AND REGULATE)
 - PROPOSED AC FOOTWAY (FULL DEPTH) (ASPHALT CONCRETE SURFACING, BINDER AND SUB BASE)
 - NEW AC SEGREGATED CYCLEWAY (ASPHALT CONCRETE SURFACING, BINDER AND REGULATE)
 - NEW GREEN COLOURED AC CYCLEWAY (GREEN ASPHALT CONCRETE SURFACING)
 - NEW SIGNALS MAINTENANCE PARKING PAD (GRASSCRETE)
 - SOFT LANDSCAPING (TOPSOIL AND GRASS SEED/POTENTIAL FOR PLANTING)
 - PROPOSED FILTER DRAIN (REFER TO DRAINAGE DRAWINGS FOR CONSTRUCTION DETAIL)
 - EARTHWORKS (1:3) - TOPSOIL AND GRASS SEED
 - EXISTING CARRIAGEWAY (NO WORKS PROPOSED)

- SIGNIFICANT ISSUE ID KEY:**
- H&S / DESIGN ISSUE
 - UTILITIES CONFLICTS
 - ENVIRONMENTAL ISSUE
 - NON HIGHWAYS LAND TAKE



NEW TRAFFIC ISLAND PROPOSED TO PROVIDE ENHANCED PEDESTRIAN CROSSING FACILITIES ON KENYONS LANE.

EXISTING CROSSING FACILITY REMOVED TO ALLOW THE PROPOSED RIGHT TURN BOX. NEW PEDESTRIAN ISLAND PROPOSED NORTH OF THE RIGHT TURN.

EXISTING RESIDENTIAL ACCESS ONTO KENYONS LANE MAINTAINED.

PROPOSED ACCESS ONTO KENYONS LANE FROM THE NEW DEVELOPMENT. TO BE AGREED WITH SEFTON AND THE DEVELOPER.

KENYONS LANE WIDENED TO TWO LANES TO PROVIDE CAPACITY FOR FUTURE DEVELOPMENT TRAFFIC. LAND TAKE REQUIRED FROM ADJACENT VERGE.

PROPOSED SEGREGATED CYCLE LEAD IN LANE FROM KENYONS LANE TO THE CYCLOPS JUNCTION.

SAFETY, HEALTH AND ENVIRONMENTAL INFORMATION

In addition to the hazards/risks normally associated with the types of work detailed on this drawing, note the following:

CONSTRUCTION	CONSTRUCTION PHASING & IMPACT ON TRAFFIC FLOW / REMOVAL OF TREES AND VEGETATION / POTENTIAL CONFLICT WITH DEVELOPMENT CONSTRUCTION TRAFFIC
MAINTENANCE/CLEANING	EXISTING DRAINAGE NETWORK IN POOR STATE
DECOMMISSIONING/DEMOLITION	NONE

It is assumed that all works will be carried out by a competent contractor working, where appropriate, to an approved method statement

© Crown Copyright and database rights 2024
Ordnance Survey
100018192

Drawing Status: **ISSUE FOR CONSTRUCTION** Suitability: **A**

SNC-LAVALIN
ATKINS
Member of the SNC-Lavalin Group

ATKINS
2nd FLOOR
THE EXCHANGE
3 NEW YORK STREET
MANCHESTER
M1 4HN
www.atkinsglobal.com
© SNC-Lavalin (2024)

Client: **Sefton Council**
Magdalen House, 30 Trinity Road, Bootle, Merseyside, L20 3NJ
Tel: 0151 934 2000

Project Title: **A59 NORTHWAY
ACTIVE TRAVEL CORRIDOR
DODDS LANE TO ROBBINS ROUNDABOUT**

Drawing Title: **DETAILED DESIGN
GENERAL ARRANGEMENT
(Sheet 5 of 9)**

C1	04/10/24	ISSUE FOR CONSTRUCTION	DS	DS	PE
P3	27/07/24	TENDER AMENDMENTS	DS	DS	PE
P2	03/04/24	AMENDMENTS FOLLOWING RSA2	DS	DS	PE
P1	20/12/23	ISSUED FOR RSA2	DS	DS	PE
Rev.	Date	Description	By	Chk'd	App'd

Scale	Designed	Drawn	Checked	Authorised
1:250	DS	DS	DS	PE
Original Size	Date	Date	Date	Date
A1	15/12/23	15/12/23	15/12/23	15/12/23
Drawing Number	Revision			
5214718-ATK-HGN-A59-DR-D-D101E	C01			

Internal Project Number: 5214718